

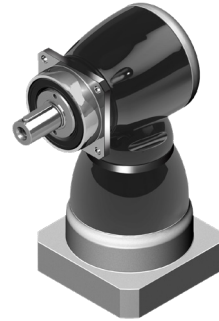
CKF SERIES DESCRIPTION

Precision Hypoid Gearbox



Candy's CKF Series is a compact, high precision right angle servo gearbox that incorporates hardened and ground hypoid gearing. In single stage, hypoid gearing efficiently provides ratios from 3:1 to 10:1, adding a planetary stage increases available ratios to 100:1. Hypoid gearing features high precision, high torque, high axial and radial load characteristics. The CKF Series offers multiple output configurations including keyed shaft, smooth shaft, splined shaft, and hollow shaft with compression clamp.

- Extremely compact/short housing design
- 90° input via precision ground hypoid gears
- High precision, high torque, low noise
- Low backlash, ≤ 3 arc minutes
- Taper roller bearings allow high axial and radial loads
- Ratios from 1:1 up to 100:1
- Compatible with many NEMA and metric motors



Ordering Information

CKF060 – 010⁽¹⁾ – S1⁽²⁾ / Motor Mfgr/Model Number

Ratio

Gearbox Size