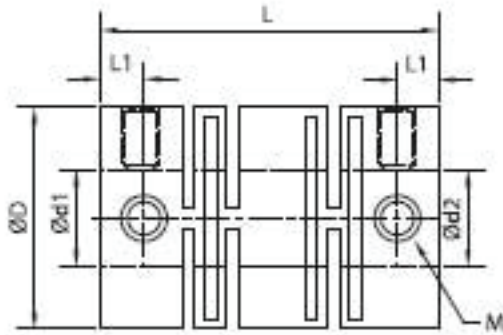
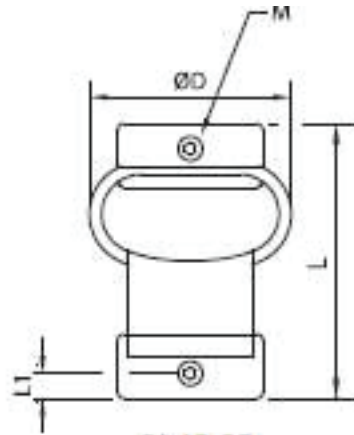


CL12 SERIES DIMENSIONS

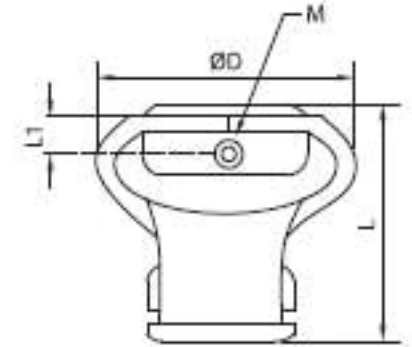
Encoder Coupling



CL12-10~22



CL12-25



CL12-44~54

MODEL	MAX BORE (ØD)		ØD MM	L MM	L1 MM	M MM	WRENCH TORQUE MM
	IN	MM					
CL12-10	0.118	3	10	12	1.8	M2	0.3
CL12-13	0.157	4	13	21	3	M3	0.7
CL12-15	0.236	6	15	22	3	M3	0.7
CL12-19	0.315	8	19	24	3.5	M4	1.9
CL12-22	0.393	10	22	26	3.6	M4	1.9
CL12-25	0.393	10	25	32	3.2	M3	0.7
CL12-44	0.551	14	44	53	6	M4	1.9
CL12-44L	0.551	14	44	65	6	M4	1.9
CL12-54	0.669	17	54	66	8	M6	6.3
CL12-54L	0.669	17	54	78	8	M6	6.3

(1) For other bore sizes which are not listed above, customized ones are available, please consult us. (2) Standard bore tolerance is for the shaft with tolerance h7 or h8; if other tolerance is required, please consult us.