

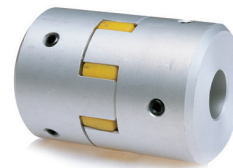
CL8 SERIES DESCRIPTION

Curved Jaw Coupling



Candy's CL8 Series zero-backlash, curved jaw coupling is a simple, cost-effective servo coupling. Easy to assemble, all you have to do is press its polyurethane sleeve into hubs on both sides of the coupling. Optimal performance is assured through its absorption of vibration, parallel and angular misalignments, and shaft end play.

- Simple, cost-effective servo quality couplings
- Available in setscrew, keyway and setscrew, and clamping designs
- Elastomer sleeve/spider absorbs vibration and multiple types of misalignment
- Available with multiple sleeve/spider options with varying hardness ratings



Setscrew Type



Clamp Type

Options

- Aluminum Hubs 6061
- Spider-Shore Hardness
 - 80A (Blue)
 - 92A (Yellow)
 - 98A (Red)
- Setscrew
- Keyway and Setscrew
- Clamp

Ordering Information

