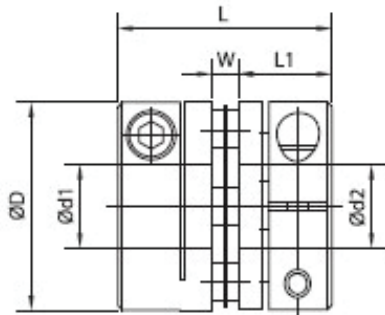
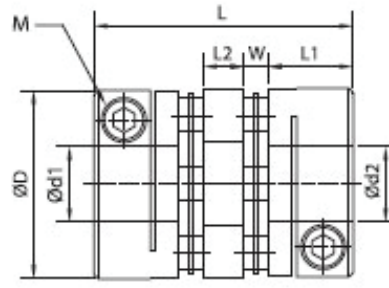
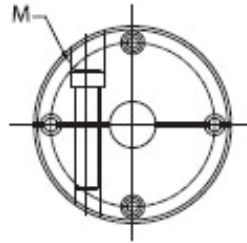


# CL5 SERIES DIMENSIONS

## Disc Coupling



Single Disc



Double Disc

MODEL	BORE RANGE (ØD1, ØD2)		ØD	L		W	L1	L2	M	WRENCH TORQUE
	SINGLE AND DOUBLE DISC			SINGLE DISC	DOUBLE DISC					
	IN	MM	MM	MM	MM	MM	MM	MM	METRIC	Nm
CL5-C12	0.11 - 0.20	3 - 5	12	12.35	15.9	0.55	5.9	3	M1.6	0.23 - 0.28
CL5-C15	0.11 - 0.20	3 - 5	15	16.45	20	1.25	7.6	2.3	M2	0.4 - 0.5
CL5-C16	0.11 - 0.24	3 - 6	16	17	23	1.25	7.9	4.8	M2	0.4 - 0.5
CL5-C19	0.11 - 0.31	3 - 8	19.5	20.7	27.8	2.3	9.2	4.8	M2.5	1.0 - 1.1
CL5-C26	0.16 - 0.39	4 - 10	26	25.5	35	2.8	11.4	6.7	M3	1.5 - 1.9
CL5-C27	0.16 - 0.55	4 - 14	27	24.8	32.9	2.8	11	5.3	M3	1.5 - 1.9
CL5-C30	0.24 - 0.55	6 - 14	30	25.8	35	3.1	11.4	6.1	M3	1.5 - 1.9
CL5-C34S	0.25 - 0.55	6.35 - 14	34	30.4	41	3.6	13.4	7	M4	3.4 - 4.1
CL5-C34	0.25 - 0.55	6.35 - 14	34	32.6	45	3.6	14.5	8.8	M4	3.4 - 4.1
CL5-C39	0.31 - 0.62	8 - 16	39	34.5	49	4.5	15	10	M4	3.4 - 4.1
CL5-C44	0.36 - 0.75	9 - 19	44	34.8	50	4.8	15	10.4	M4	3.4 - 4.1
CL5-C50	0.39 - 0.866	10 - 22	50	40.5	57	5.5	17.5	11	M5	7.0 - 8.5
CL5-C56	0.43 - 0.95	11 - 24	56	45.5	63	5.5	20	12	M5	7.0 - 8.5
CL5-C62	0.55 - 1.19	14 - 30	62	51	69.5	3	24	15.5	M6	14 - 15
CL5-C68	0.55 - 1.37	14 - 35	68	54	74	6	24	14	M6	14 - 15
CL5-C82	0.71 - 1.37	18 - 35	82	68	98	8	30	22	M8	27 - 30
CL5-C94	0.98 - 1.57	25 - 40	94	68.5	98	8.5	30	21	M10	55 - 60
CL5-C104	1.38 - 1.77	35 - 45	104	70	102	10	30	22	M10	55 - 60

(1) For other bore sizes which are not listed above, customized ones are available, please consult us. (2) Standard bore tolerance is for the shaft with tolerance h7 or h8; if other tolerance is required, please consult us.