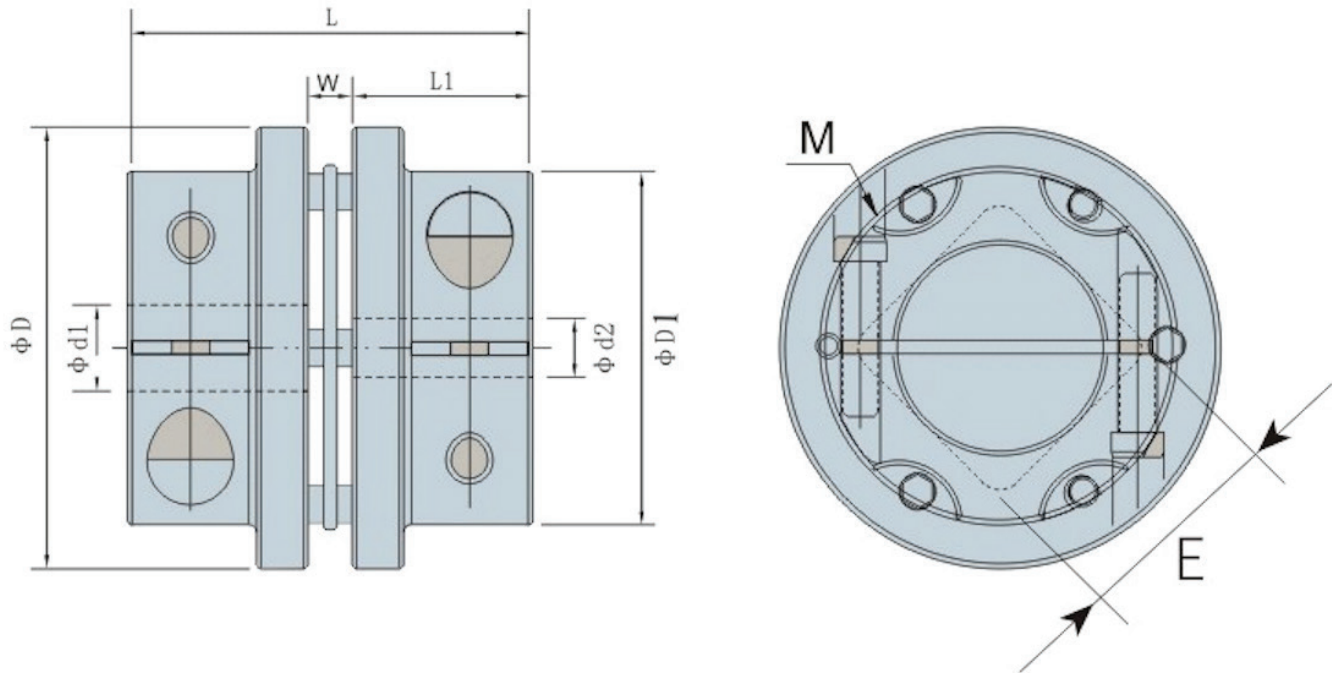


# CL24 SERIES DIMENSIONS (SINGLE PLATE)

Disc Coupling



MODEL	ΦD1ΦD2 BORE RANGE (mm)	ΦD1 (mm)	ΦD (mm)	L (mm)	W (mm)	L1 (mm)	E (mm)	M (mm)	WRENCH TORQUE (Nm)
CL24-CC60	12 – 22	44	60	54	6	24	31.5	2-M6	14 – 15
	22 – 28	48							
CL24-CC70	18 – 25	47	70	57.3	7.3	25	38	2-M6	14 – 15
	25 – 35	56							
CL24-CC80	22 – 25	53	80	69	9	30	42	2-M8	27 – 30
	25 – 35	70							
CL24-CC90	25 – 32	66	90	70	10	30	43	2-M8	27 – 30
	32 – 42	74							
CL24-CC100	32 – 48	84	100	91	11	40	50	2-M10	55 – 60
CL24-CC128	32 – 45	88	128	92	12	40	60	2-M12	70 – 80
	45 – 60	105							
CL24-CC148	50 – 80	128	148	113	13	50	70	2-M12	70 – 80

(1) For other bore sizes which are not listed above, customized ones are available, please consult us. (2) Standard bore tolerance is for the shaft tolerance with h7 or h8, if other tolerance is required, please consult us.