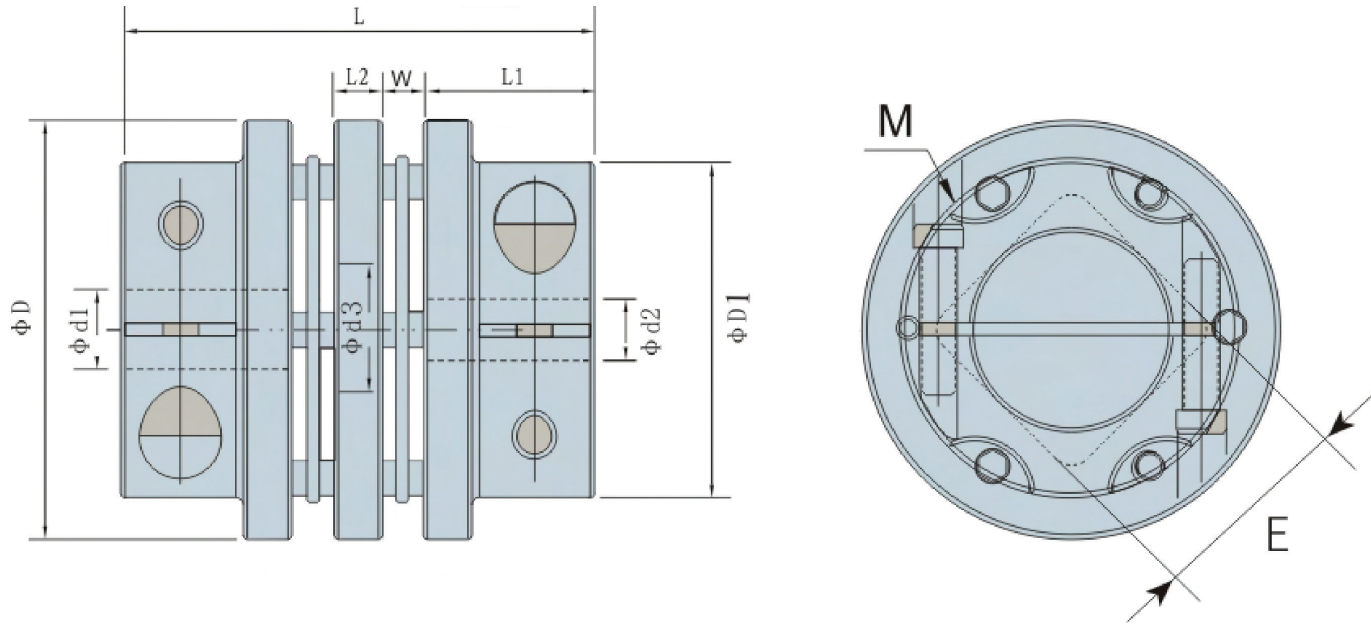


CL24 SERIES DIMENSIONS (DOUBLE PLATE)

Disc Coupling



MODEL	ΦD1ΦD2 BORE RANGE (mm)	ΦD1 (mm)	ΦD (mm)	L (mm)	W (mm)	L1 (mm)	L2 (mm)	D3 (mm)	E (mm)	M (mm)	WRENCH TORQUE (Nm)
CL24-CC60, CL24-CC60 WP	12 – 22	44	60	67	6	24	7	30	31.5	2-M6	14 – 15
	22 – 28	48									
CL24-CC70, CL24-CC70 WP	18 – 25	47	70	72.6	7.3	25	8	36	38	2-M6	14 – 15
	25 – 35	56									
CL24-CC80, CL24-CC80 WP	22 – 25	53	80	87.2	9	30	9.2	36	42	2-M8	27 – 30
	25 – 35	70									
CL24-CC90, CL24-CC90 WP	25 – 32	66	90	88	10	30	8	43	43	2-M8	27 – 30
	32 – 42	74									
CL24-CC100, CL24-CC100 WP	32 – 48	84	100	112	11	40	10	56	50	2-M10	55 – 60
CL24-CC128, CL24-CC128 WP	32 – 45	88	128	116	12	40	12	65	60	2-M10	55 – 60
	45 – 60	105									
CL24-CC148, CL24-CC148 WP	50 – 80	128	148	143	13	50	17	70	70	2-M12	70 – 80

(1) For other bore sizes which are not listed above, customized ones are available, please consult us. (2) Standard bore tolerance is for the shaft tolerance with h7 or h8, if other tolerance is required, please consult us.