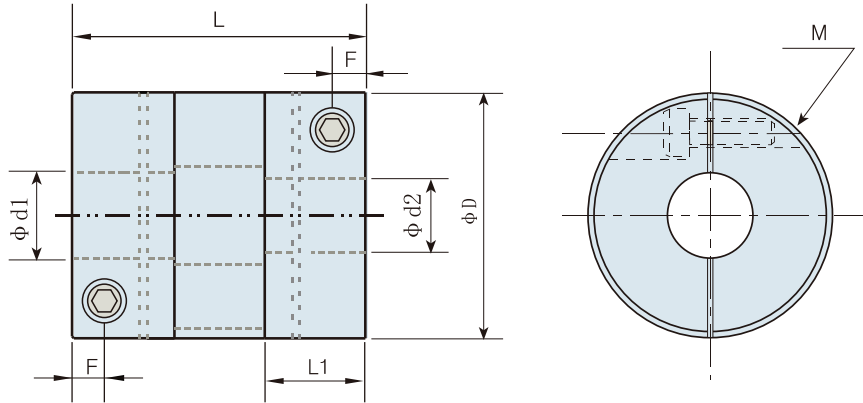


CL23 SERIES DIMENSIONS

High Response Coupling



MODEL	ΦD1ΦD2 BORE RANGE (mm)	ΦD (mm)	L (mm)	ΦD1 (mm)	F (mm)	F1 (mm)	L1 (mm)	M (mm)	WRENCH TORQUE (Nm)
CL23-C15S	3 – 6	15	18	16	2.1	5.25	6.4	M1.6	0.23 – 0.28
CL23-C15	3 – 6	15	23	16	2.1	5.25	6.4	M1.6	0.23 – 0.28
CL23-C20	4 – 8	20	26	20	2.5	6.5	7.6	M2.0	0.4 – 0.5
CL23-C25	5 – 12	25	32	27	3.0	9.25	9.6	M2.5	1.0 – 1.1
CL23-C30	8 – 15	30	36	32	3.5	11.25	10.9	M3	1.5 – 1.9
CL23-C35	8 – 16	35	38	35	3.75	12.5	11.8	M3	1.5 – 1.9
CL23-C40	10 – 20	40	48	41.5	5.5	14.5	17	M5	7.0 – 8.5
CL23-C45	12 – 22	45	50	47	5.5	16.25	18	M5	7.0 – 8.5

(1) For other bore sizes which are not listed above, customized ones are available, please consult us. (2) Standard bore tolerance is for the shaft with tolerance h7 or h8; if other tolerance is required, please consult us.