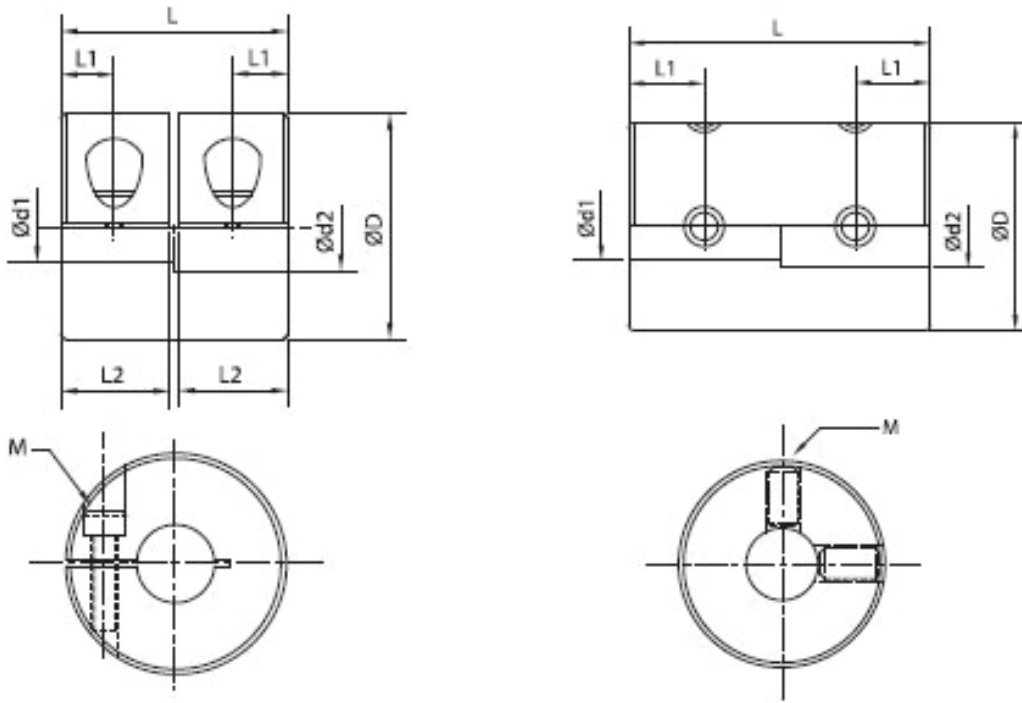


# CL13 SERIES DIMENSIONS

Rigid Coupling



MODEL	BORE RANGE (ØD1, ØD2)				ØD	L		L1		L2	M		WRENCH TORQUE			
	SETSCREW		CLAMP			SETSCREW AND CLAMP	SETSCREW	CLAMP	SETSCREW		CLAMP	CLAMP	SETSCREW	CLAMP	SETSCREW	CLAMP
	IN	MM	IN	MM												
CL13-16, SCL13-16, CL13-C16, SCL13-C16	0.11 – 0.24	3 – 6	0.11 – 0.24	3 – 6	16	24	16	6	3.75	7.7	M3	M2.5	0.7	1.0 – 1.1		
CL13-20, SCL13-20, CL13-C20, SCL13-C20	0.23 – 0.39	6 – 10	0.23 – 0.31	6 – 8	20	30	20	7	4.75	9.5	M3	M2.5	0.7	1.0 – 1.1		
CL13-25, SCL13-25, CL13-C25, SCL13-C25	0.31 – 0.47	8 – 12	0.31 – 0.39	8 – 10	25	36	25	9	6	12	M4	M3	1.9	1.5 – 1.9		
CL13-32, SCL13-32, CL13-C32, SCL13-C32	0.47 – 0.63	12 – 16	0.47 – 0.55	12 – 14	32	41	32	10	7.75	15.5	M4	M4	1.9	3.4 – 4.1		
CL13-40, SCL13-40, CL13-C40, SCL13-C40	0.63 – 0.79	16 – 20	0.63 – 0.71	16 – 18	40	44	44	10.5	10.5	21	M5	M5	3.7	7.0 – 8.5		
CL13-50, SCL13-50, CL13-C50, SCL13-C50	-	-	0.71 – 0.94	18 – 24	50	-	55	-	13	26	-	M6	-	14 – 15		
CL13-C16L, SCL13-C16L	-	-	0.11 – 0.24	3 – 6	16	-	22	-	3.75	10.7	-	M2.5	-	1.0 – 1.1		
CL13-C20L, SCL13-C20L	-	-	0.23 – 0.31	6 – 8	20	-	24	-	4.75	11.5	-	M2.5	-	1.0 – 1.1		
CL13-C25L, SCL13-C25L	-	-	0.31 – 0.39	8 – 10	25	-	36	-	6	17.5	-	M3	-	1.5 – 1.9		
CL13-C32L, SCL13-C32L	-	-	0.47 – 0.55	12 – 14	32	-	40	-	6.5	19.5	-	M4	-	3.4 – 4.1		
CL13-C40L, SCL13-C40L	-	-	0.63 – 0.71	16 – 18	40	-	52	-	7	25	-	M5	-	7.0 – 8.5		
CL13-C50L, SCL13-C50L	-	-	0.71 – 0.94	18 – 24	50	-	66	-	9	32	-	M6	-	14 – 15		

(1) For other bore sizes which are not listed above, customized ones are available, please consult us. (2) Standard bore tolerance is for the shaft with tolerance h7 or h8; if other tolerance is required, please consult us.