

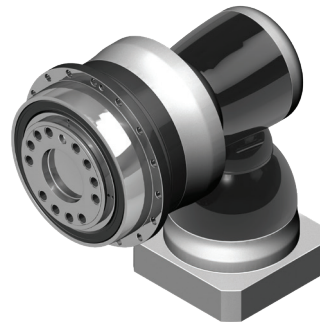
CHK SERIES DESCRIPTION

Precision Planetary Gearbox



Candy's CHK Series is a high precision right angle servo gearbox with a rotary flange output. The CHK is designed around a combination of case hardened and ground planetary and hypoid gearing, increasing accuracy and wear resistance. Compact structure and flanged output provide torsional rigidity and high axial and radial load capacity. Spiral bevel right angle gearset available in the CHKC Series.

- Flanged output increases torsional rigidity, radial and axial load capacity
- Precision ground gears reduce backlash to less than 2 arc minutes
- Available ratios from 12:1 up to 10,000:1



Ordering Information

CHK090 – 005⁽¹⁾ – Motor

Motor Mfg/Model Number

Ratio

Gearbox Size