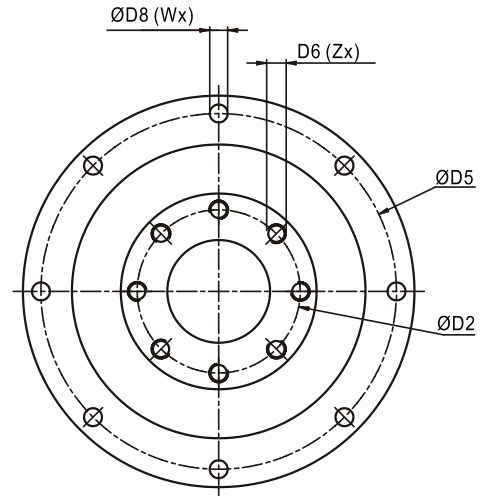
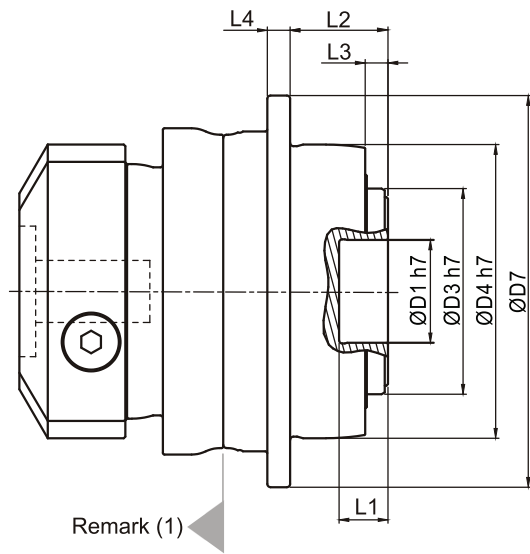
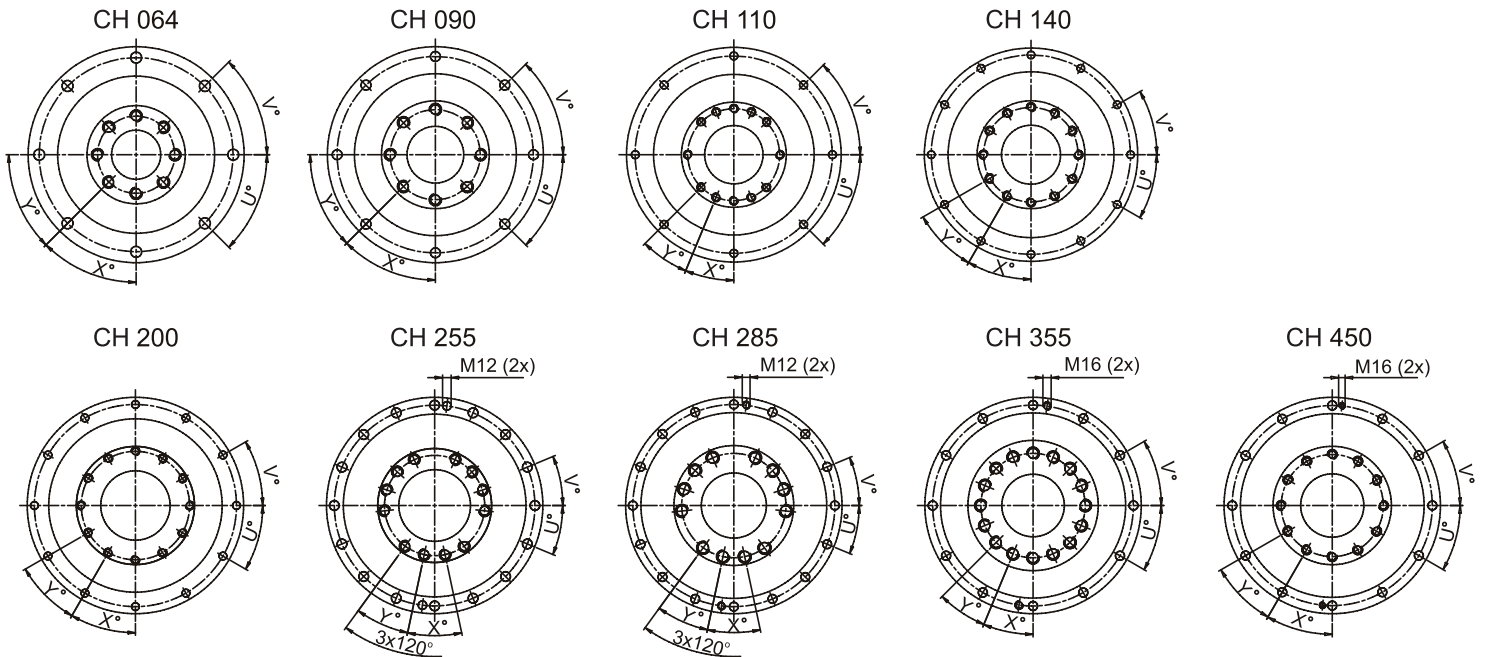


# CH SERIES DIMENSIONS

Precision Planetary Gearbox



Remark (1)



DIMENSION	CH 064	CH 090	CH 110	CH 140	CH 200	CH 255	CH 285	CH 355	CH 450
D1 (h7)	20	31.5	40	50	80	100	100	120	155
D2	31.5	50	63	80	125	140	160	200	250
D3 (h7)	40	63	80	100	160	180	200	250	315
D4 (h7)	64	90	110	140	200	255	285	355	450
D5	79	109	135	168	233	280	310	385	490
D6 x Pitch x Deep	M5x0.8Px8	M6x1Px10	M6x1Px11	M8x1.25Px15	M10x1.5Px20	M16x2Px25	M20x2.5Px31	M24x3Px32	M30x3.5Px40
D7	88	120	147	180	249.5	302	332	415	530
D8	4.5	5.5	5.5	6.6	9	13.5	13.5	17.5	22
L1	8	15	15	15	16	16	16	35	24
L2	19.5	30	29	38	50	66	75	80	85
L3	4	7	7	7.5	8.5	13.5	16.5	20	20
L4	5	7	8	10	12	18	20	45	60
X in Degree	45°	45°	22.5°	30°	30°	24°	24°	22.5°	30°
Y in Degree	45°	45°	22.5°	30°	30°	24°	24°	22.5°	30°
Z	8	8	12	12	12	12	12	16	12
U in Degree	45°	45°	45°	30°	30°	22.5°	22.5°	30°	30°
V in Degree	45°	45°	45°	30°	30°	22.5°	22.5°	30°	30°
W	8	8	8	12	12	16	16	12	12

(1) Dimensions are related to motor interface. Please contact Candy Controls for details.