

Curved Jaw Couplings

CL8 Series

- Zero backlash, flexible shaft
- Absorbs vibration, angular and parallel misalignment
- Provides electrical isolation
- Identical clockwise and counterclockwise rotation
- Select up to three spider hardnesses
- Multiple bore and shaft connecting configurations



Setscrew Type



Clamp Type

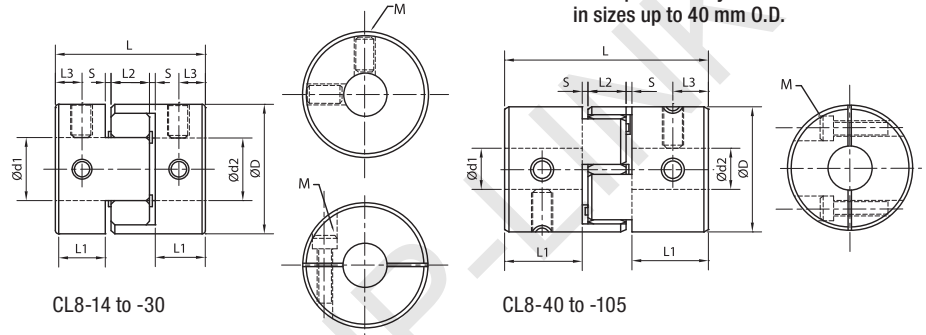
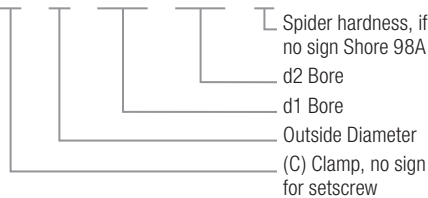
CL8 OPTIONS

Aluminum Hubs 6061
 Elastomer Spider-Shore Hardness
 -80A (Blue)
 -92A (Yellow)
 -98A (Red)
 Setscrew
 Clamp

* Blue spider is only available in sizes up to 40 mm O.D.

ORDERING INFORMATION

CL8 - □ - □ - □ - □ - □ - □ - □



CL8 SETSCREW AND CLAMP DIMENSIONS

Model	Bore Range (Ød1-Ød2)		ØD	L	L1	L2	S	L3		M		Wrench Torque						
	Setscrew and Clamp							Setscrew	Clamp	Setscrew	Clamp	Setscrew	Clamp					
	in	mm						mm	mm	mm	mm	mm	mm	mm	metric	metric	Nm	Nm
CL8-14	0.07-0.27	2-7	14	22	7	6	1	3.5	3.5	M3	M2.5	1	1					
CL8-20	0.15-0.39	4-10	20	30	10	8	1	5	5	M4	M3	1.3	1.3					
CL8-25	0.15-0.47	4-12	25	34	11	10	1	5	5	M4	M4	1.5	1.5					
CL8-30	0.31-0.62	8-16	30	35	11	10	1.5	5	5	M4	M4	1.7	1.7					
CL8-40S	0.55-0.94	14-24	40	55	19.5	12	2	10	10	M5	M6	4	8					
CL8-40	0.55-0.94	14-24	40	66	25	12	2	10	10	M5	M6	4	8					
CL8-55	0.55-1.10	14-28	55	78	30	14	2	10	10.5	M5	M6	4	8					
CL8-65	0.74-1.49	19-38	65	90	35	15	2.5	15	11.5	M8	M8	15	15					
CL8-80	0.94-1.77	24-45	80	114	45	18	3	15	15.5	M8	M8	15	15					
CL8-95	1.18-2.16	30-55	95	126	50	20	3	20	18	M8	M10	15	25					
CL8-105	1.37-2.36	35-60	105	140	56	21	3.5	20	21	M8	M12	15	35					

CL8 SETSCREW AND CLAMP SPECIFICATIONS

Model	Rated Torque		Max. Torque		Max. Speed (rpm)		Moment of Inertia	Static Torsional Stiffness	Errors of Eccentricity	Errors of Shaft Angularity	Errors of Shaft Endplay	Mass (g)	
	lb-in	Nm	lb-in	Nm	Setscrew	Clamp						kg·m ²	Nm/rad
CL8-14	9.73	1.1	19.47	2.2	19000	19000	5.9x10 ⁻⁴	46	0.02	1	+ 0.6	26	26
CL8-20	24.78	2.8	49.56	5.6	17000	17000	6.7x10 ⁻⁴	55	0.02	1	+ 0.6	37	37
CL8-25	53.10	6.0	106.20	12.0	16000	16000	7.6x10 ⁻⁴	63	0.02	1	+ 0.6	42	42
CL8-30	57.52	6.5	115.05	13.0	15000	12000	8.5x10 ⁻⁴	72	0.02	1	+ 0.6	46	50
CL8-40S	283.20	32.0	566.40	64.0	13000	10000	9.4x10 ⁻⁴	500	0.02	1	+ 0.8	140	150
CL8-40	283.20	32.0	566.40	64.0	13000	10000	1.1x10 ⁻³	550	0.02	1	+ 0.8	148	156
CL8-55	407.10	46.0	814.20	92.0	10500	8000	4.4x10 ⁻³	1500	0.02	1	+ 0.8	350	362
CL8-65	964.65	109.0	1929.30	218.0	8300	6000	9.0x10 ⁻³	2800	0.02	1	+ 0.8	572	582
CL8-80	1194.75	135.0	2389.50	270.0	7000	4600	1.8x10 ⁻²	3500	0.02	1	+ 1	950	966
CL8-95	2301.00	260.0	4602.00	520.0	6000	3800	2.0x10 ⁻²	4600	0.02	1	+ 1	1800	1820
CL8-105	3805.50	430.0	7611.00	860.0	5500	3400	3.2x10 ⁻²	5800	0.02	1	+ 1	2400	2430



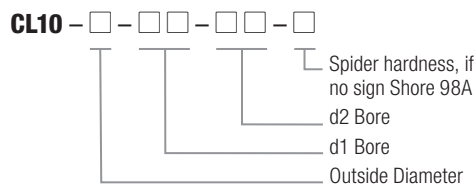
Locking Assembly

CL10 OPTIONS

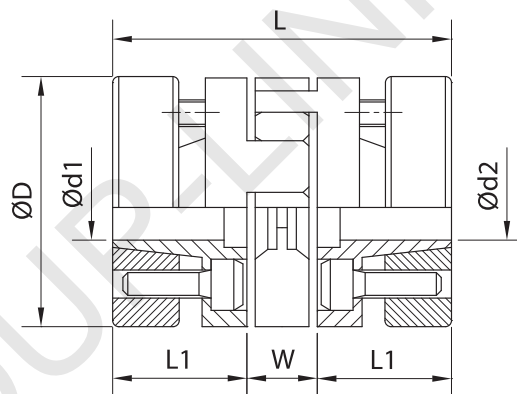
Aluminum Hubs 6061
 Elastomer Spider-Shore Hardness
 -80A (Blue)
 -92A (Yellow)
 -98A (Red)
 Locking Assembly

* Blue spider is only available in sizes up to 40 mm O.D.

ORDERING INFORMATION



*Hubs can be paired with CL8 and CL20



CL10 LOCKING ASSEMBLY DIMENSIONS

Model	Bore Range (Ød1-Ød2)		ØD	L	L1	W	M	Wrench Torque
	in	mm						
CL10-30	0.31-0.55	8-14	30	50	18.5	13	M3 (4)	1.3
CL10-40	0.43-0.78	11-20	40	66	25	16	M4 (6)	2.7
CL10-55	0.55-1.10	14-28	55	78	30	18	M5 (4)	6
CL10-65	0.74-1.49	19-38	65	90	35	20	M5 (8)	6
CL10-80	0.94-1.77	24-45	80	114	45	24	M6 (8)	10
CL10-85	1.18-1.96	30-50	95	126	50	26	M8 (4)	35
CL10-105	1.37-2.36	35-60	105	140	56	28	M8 (4)	35

CL10 LOCKING ASSEMBLY SPECIFICATIONS

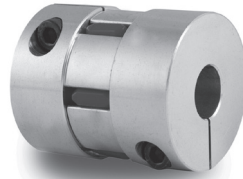
Model	Rated Torque		Max. Torque		Max. Speed	Moment of Inertia	Static Torsional Stiffness	Errors of Eccentricity	Errors of Shaft Angularity	Errors of Shaft Endplay	Mass
	lb-in	Nm	lb-in	Nm							
CL10-30	65.49	7.4	130.98	14.8	20000	8.7x10 ⁻⁴	510	0.02	1	+ 0.6	50
CL10-40	84.07	9.5	168.15	19.0	15000	1.12x10 ⁻³	550	0.02	1	+ 0.8	120
CL10-55	300.90	34.0	601.80	68.0	13000	4.5x10 ⁻³	1510	0.02	1	+ 0.8	280
CL10-65	840.75	95.0	1681.50	190.0	10500	9.1x10 ⁻³	2800	0.02	1	+ 0.8	450
CL10-80	1194.75	135.0	2389.50	270.0	8600	1.9x10 ⁻²	3600	0.02	1	+ 1	960
CL10-95	2035.50	230.0	4071.00	460.0	7500	2.2x10 ⁻²	4700	0.02	1	+ 1	2310
CL10-105	3363.00	380.0	6726.00	760.0	6000	3.3x10 ⁻²	5800	0.02	1	+ 1	3090

Curved Jaw Couplings

CL16 Economy Series



Setscrew Type



Clamp Type

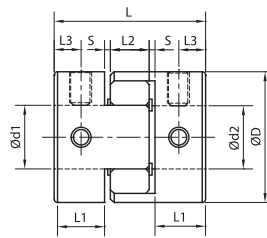
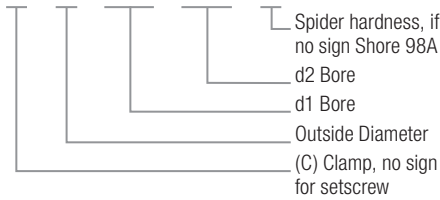
CL16 OPTIONS

- Aluminum Hubs
- Elastomer Spider-Shore Hardness
 - 80A (Blue)
 - 92A (Yellow)
 - 98A (Red)
- Setscrew
- Clamp

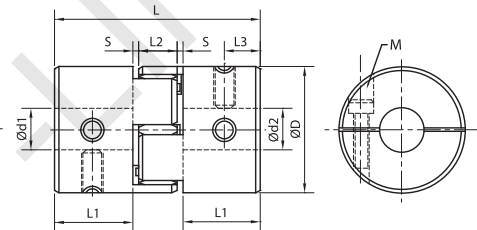
* Blue spider is only available in sizes up to 40 mm O.D.

ORDERING INFORMATION

CL16 - □ - □ - □ - □ - □ - □ - □



CL16-15 to -32



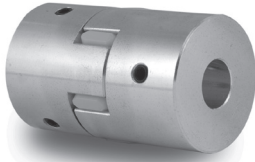
CL16-42 to -108

CL16 SETSCREW AND CLAMP DIMENSIONS

Model	Bore Range (Ød1-Ød2)		ØD	L	L1	L2	S	L3	M		Wrench Torque							
	Setscrew and Clamp								Setscrew	Clamp	Setscrew	Clamp						
	in	mm							mm	mm	mm	mm	mm	mm	metric	metric	Nm	Nm
CL16-15	0.11-0.31	3-8	15	20	6	6	1	3	M3	M2.5	1	1						
CL16-26	0.15-0.50	4-12.7	26	26	8	8	1	4	M4	M3	1.5	1.5						
CL16-32	0.19-0.63	5-16	32	32	10	9	1.5	5	M4	M4	1.7	1.7						
CL16-42	0.31-0.94	8-24	42	50	17	12	2	8.5	M5	M5	4	8						
CL16-56	0.47-1.26	12-32	56	58	20	14	2	10	M5	M6	4	8						
CL16-66	0.74-1.38	19-35	66	62	21	15	2.5	10.5	M8	M8	15	15						
CL16-82	0.78-1.77	20-45	82	86	31	18	3	15.5	M8	M8	15	15						
CL16-98	1.10-2.36	28-60	98	94	34	20	3	17	M8	M10	15	25						
CL16-108	1.37-2.36	35-60	108	123	46	24	3.5	23	M8	M12	15	35						

CL16 SETSCREW AND CLAMP SPECIFICATIONS

Model	Rated Torque		Max. Torque		Max. Speed (rpm)		Moment of Inertia	Static Torsional Stiffness (Nm/rad)		Errors of Eccentricity	Errors of Shaft Angularity	Errors of Shaft Endplay	Mass (g)	
	lb-in	Nm	lb-in	Nm	Setscrew	Clamp		kg·m ²	Setscrew				Clamp	mm
CL16-15	9.70	1.1	19.50	2.2	19000	19000	3.9x10 ⁻⁴	45	45	0.02	1	+0.6	20	20
CL16-26	53.10	6.0	106.20	12.0	16000	16000	6.8x10 ⁻⁴	56	56	0.02	1	+0.6	25	25
CL16-32	57.50	6.5	115.10	13.0	15000	12000	8.3x10 ⁻⁴	70	70	0.02	1	+0.6	46	46
CL16-42	283.20	32.0	566.40	64.0	13000	10000	9.3x10 ⁻⁴	490	490	0.02	1	+0.8	135	140
CL16-56	407.10	46.0	814.20	92.0	10500	8000	3.8x10 ⁻³	1470	1310	0.02	1	+0.8	300	310
CL16-66	964.70	109.0	1929.30	218.0	8300	6000	8.0x10 ⁻³	2700	2240	0.02	1	+0.8	570	465
CL16-82	1194.80	135.0	2389.50	270.0	7000	4600	1.5x10 ⁻²	3100	3400	0.02	1	+1	910	870
CL16-98	2301.00	260.0	4602.00	520.0	6000	3800	1.9x10 ⁻²	4400	4410	0.02	1	+1	1530	1710
CL16-108	3805.50	430.0	7611.00	860.0	5500	3400	3.0x10 ⁻²	5700	5700	0.02	1	+1	2200	2200



Setscrew Type



Clamp Type

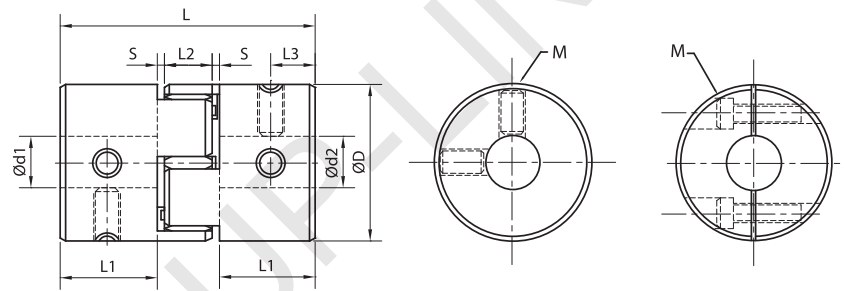
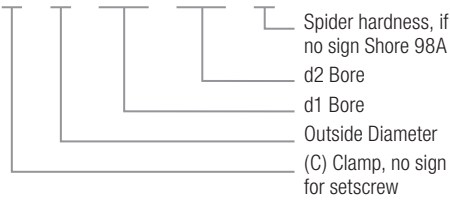
CL17 OPTIONS

- Aluminum Hubs
- Elastomer Spider-Shore Hardness
 - 80A (Blue)
 - 92A (Yellow)
 - 98A (Red)
- Setscrew
- Clamp

* Blue spider is only available in sizes up to 40 mm O.D.

ORDERING INFORMATION

CL17 - □ - □ - □ □ - □ □ - □



CL17 SETSCREW AND CLAMP DIMENSIONS

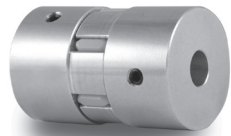
Model	Bore Range (Ød1-Ød2)		ØD	L	L1	L2	S	L3	M		Wrench Torque	
	Setscrew and Clamp								Setscrew	Clamp	Setscrew	Clamp
	in	mm							mm	mm	Nm	Nm
CL17-42	0.31-0.94	8-24	42	66	25	12	2	8.5	M5	M5	4	8
CL17-56	0.47-1.26	12-32	56	78	30	14	2	10	M5	M6	4	8
CL17-66	0.74-1.37	19-35	66	90	35	15	2.5	10.5	M8	M8	15	15
CL17-82	0.78-1.77	20-45	82	114	45	18	3	15.5	M8	M8	15	15
CL17-98	1.10-2.36	28-60	98	126	50	20	3	17	M8	M10	15	25
CL17-108	1.37-2.36	35-60	108	140	54.5	24	3.5	23	M8	M12	15	35

CL17 SETSCREW AND CLAMP SPECIFICATIONS

Model	Rated Torque		Max. Torque		Max. Speed (rpm)		Moment of Inertia (kg•m ²)		Static Torsional Stiffness	Errors of Eccentricity	Errors of Angularity	Errors of Shaft Endplay	Mass (g)	
	lb-in	Nm	lb-in	Nm	Setscrew	Clamp	Setscrew	Clamp					Setscrew	Clamp
CL17-42	283.20	32.0	566.40	64.0	13000	10000	1.14x10 ⁻⁴	1.15x10 ⁻³	550	0.02	1	+0.8	160	165
CL17-56	407.10	46.0	814.20	92.0	10500	8000	4.4x10 ⁻³	4.5x10 ⁻³	1520	0.02	1	+0.8	360	375
CL17-66	964.65	109.0	1929.30	218.0	8300	6000	9.0x10 ⁻³	9.1x10 ⁻³	2810	0.02	1	+0.8	590	600
CL17-82	1194.75	135.0	2389.50	270.0	7000	4600	1.8x10 ⁻²	1.81x10 ⁻²	3560	0.02	1	+1	970	975
CL17-98	2301.00	260.0	4602.00	520.0	6000	3800	2.0x10 ⁻²	2.1x10 ⁻²	4750	0.02	1	+1	1900	1910
CL17-108	3805.50	430.0	7611.00	860.0	5500	3400	3.3x10 ⁻²	3.3x10 ⁻²	5850	0.02	1	+1	2450	2510

Curved Jaw Couplings

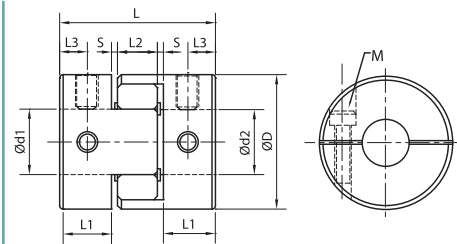
CL20 Economy Series



Setscrew Type



Clamp Type



CL20-14 to -30

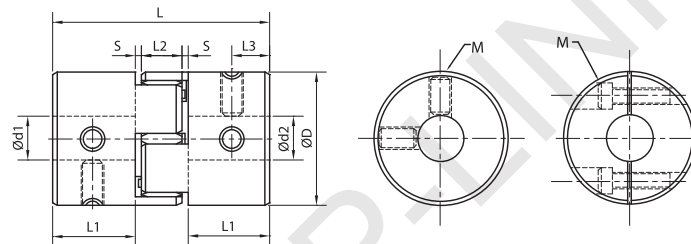
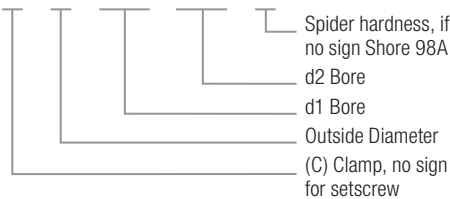
CL20 OPTIONS

- Aluminum Hubs
- Elastomer Spider-Shore Hardness
 - 80A (Blue)
 - 92A (Yellow)
 - 98A (Red)
- Setscrew
- Clamp

* Blue spider is only available in sizes up to 40 mm O.D.

ORDERING INFORMATION

CL20 - □ - □ - □ - □ - □ - □



CL20-40 to -105

CL20 SETSCREW AND CLAMP DIMENSIONS

Model	Bore Range (Ød1-Ød2)		ØD	L	L1	L2	S	L3		M		Wrench Torque	
	Setscrew and Clamp							Setscrew	Clamp	Setscrew	Clamp	Setscrew	Clamp
	in	mm						mm	mm	mm	mm	metric	metric
CL20-14	0.078-0.27	2-7	14	22	7	6	1	3.5	3.5	M3	M2.5	1	1
CL20-20	0.15-0.39	4-10	20	30	10	8	1	5	5	M4	M3	1.3	1.3
CL20-25	0.15-0.47	4-12	25	34	11	10	1	5	5	M4	M4	1.5	1.5
CL20-30	0.31-0.63	8-16	30	35	11	10	1.5	5	5	M4	M4	1.7	1.7
CL20-40S	0.55-0.94	14-24	40	55	19.5	12	2	10	10	M5	M6	4	8
CL20-40	0.55-0.94	14-24	40	66	25	12	2	10	10	M5	M6	4	8
CL20-55	0.55-1.10	14-28	55	78	30	14	2	10	10.5	M5	M6	4	8
CL20-65	0.74-1.49	19-38	65	90	35	15	2.5	15	11.5	M8	M8	15	15
CL20-80	0.94-1.77	24-45	80	114	45	18	3	15	15.5	M8	M8	15	15
CL20-95	1.18-2.16	30-55	95	126	50	20	3	20	18	M8	M10	15	25
CL20-105	1.37-2.36	35-60	105	140	56	21	3.5	20	21	M8	M12	15	35

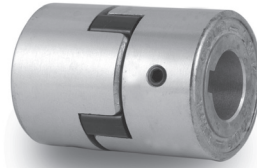
CL20 SETSCREW AND CLAMP SPECIFICATIONS

Model	Rated Torque		Max. Torque		Max. Speed (rpm)		Moment of Inertia	Static Torsional Stiffness	Errors of Eccentricity	Errors of Shaft Angularity	Errors of Shaft Endplay	Mass (g)	
	lb-in	Nm	lb-in	Nm	Setscrew	Clamp						kg·m ²	Nm/rad
CL20-14	9.73	1.1	19.47	2.2	19000	19000	5.9x10 ⁻⁴	46	0.02	1	+0.6	26	26
CL20-20	24.78	2.8	49.56	5.6	17000	17000	6.7x10 ⁻⁴	55	0.02	1	+0.6	37	37
CL20-25	53.10	6.0	106.20	12.0	16000	16000	7.6x10 ⁻⁴	63	0.02	1	+0.6	42	42
CL20-30	57.52	6.5	115.05	13.0	15000	12000	8.5x10 ⁻⁴	72	0.02	1	+0.6	46	50
CL20-40S	283.20	32.0	566.40	64.0	13000	10000	9.4x10 ⁻⁴	500	0.02	1	+0.8	140	150
CL20-40	283.20	32.0	566.40	64.0	13000	10000	1.1x10 ⁻³	550	0.02	1	+0.8	148	156
CL20-55	407.10	46.0	814.20	92.0	10500	8000	4.4x10 ⁻³	1500	0.02	1	+0.8	350	362
CL20-65	964.72	109.0	1929.30	218.0	8300	6000	9.0x10 ⁻³	2800	0.02	1	+0.8	572	582
CL20-80	1194.75	135.0	2389.50	270.0	7000	4600	1.8x10 ⁻²	3500	0.02	1	+1	950	966
CL20-95	2301.00	260.0	4602.00	520.0	6000	3800	2.0x10 ⁻²	4600	0.02	1	+1	1800	1820
CL20-105	3805.50	430.0	7611.00	860.0	5500	3400	3.2x10 ⁻²	5800	0.02	1	+1	2400	2430

Jaw Couplings

CL19 General Duty Series

- General duty couplings
- Rubber spider dampens vibration
- Economical multi-purpose couplings

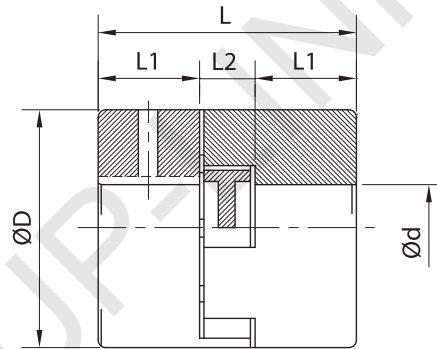
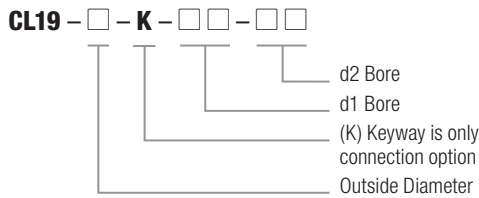


Keyway Type

CL19 OPTIONS

- Aluminum Hubs
- Rubber Spider
- Keyway & Setscrew

ORDERING INFORMATION



CL19 KEYWAY AND SETSCREW DIMENSIONS

Model	Bore Range (Ød1-Ød2)		ØD	L	L1	L2	M	Wrench Torque
	in	mm						
CL19-27K	0.19-0.63	5-16	27	44	15.5	13	M4	1.5
CL19-35K	0.19-0.79	5-20	35	50	18.5	13	M4	1.5
CL19-45K	0.39-1.02	10-26	45	55	21	13	M5	4
CL19-55K	0.47-1.10	12-28	55	55	21	13	M5	4
CL19-55LK	0.47-1.10	12-28	55	61	24	13	M5	4
CL19-66K	0.55-1.42	14-36	66	88	35	18	M8	15
CL19-85K	0.70-1.89	18-48	85	110	44	22	M8	15

CL19 KEYWAY AND SETSCREW SPECIFICATIONS

Model	Rated Torque		Max. Torque		Max. Speed	Moment of Inertia	Errors of Eccentricity	Errors of Shaft Angularity	Errors of Shaft Endplay	Mass
	lb-in	Nm	lb-in	Nm						
CL19-27K	20.35	2.3	39.82	4.6	12000	5.1x10 ⁻⁶	0.2	1	± 0.5	60
CL19-35K	39.82	4.5	79.65	9.0	9000	1.78x10 ⁻⁵	0.2	1	± 0.5	120
CL19-45K	132.75	15.0	265.50	30.0	7000	5.35x10 ⁻⁴	0.2	1	± 0.5	210
CL19-55K	194.70	22.0	389.40	44.0	6000	1.14x10 ⁻⁴	0.3	1	± 0.5	310
CL19-55LK	194.70	22.0	389.40	44.0	6000	1.4x10 ⁻⁴	0.3	1	± 0.5	358
CL19-66K	354.00	40.0	708.00	80.0	5000	4.33x10 ⁻⁴	0.3	1	± 0.7	785
CL19-85K	663.75	75.0	1327.50	150.0	4000	1.43x10 ⁻³	0.3	1	± 0.7	1560