

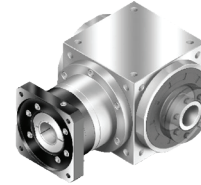
CT/CTB FLANGE SERIES DESCRIPTION

Precision Spiral Bevel Gearbox

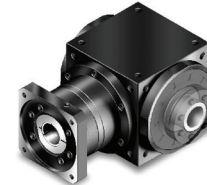


The CT/CTB Flange Series are high precision, low backlash spiral bevel gearboxes fitted with an input flange designed to fit most servo motors. The CT Series is 100% stainless steel (shafts, housing, hardware) while the CTB Series is standard carbon steel. All other CT/CTB dimensions and specifications are the same, and each version is available in a number of output configurations including two shafts, single shaft and hollow shaft. Split power, turn 90 degrees and/or change direction of shaft rotation with these precision spiral bevel gearboxes.

- CT flange series is 100% stainless steel
- CTB flange series is carbon steel
- Ratios from 1:1 up to 500:1
- High precision beginning at 6 arc minutes backlash
- Multiple output options
- Fit most metric and NEMA servo motors



Stainless Steel - CT



Carbon Steel - CTB

Ordering Information

CT/CTB065 – FL1 – 200 – S1 – Motor

Motor Designation:
Manufacturer Type And Model

Shaft Option:
S1: Smooth Output Shaft
S2: Output Shaft with Key

Ratio:
1 Stage: 1, 1.5, 2, 3, 4, 5
2 Stage: 7, 10, 15, 20, 25, 35, 50
3 Stage: 75, 100, 125, 150, 200, 250, 350, 500

Gearbox
FL / FLM1 / FLM2 / FL1 / FL1M1 / FL1M2 / FR1 / FR1M1 /
FR1M2 / FH / FHM1 / FHM2 / FC / FCM1 / FCM2

Gearbox Size:
CT065, CT075, CT090, CT110, CT140, CT170, CT210, CT240, CT280 CTB065,
CTB075, CTB090, CTB110, CTB140, CTB170, CTB210, CTB240, CTB280