

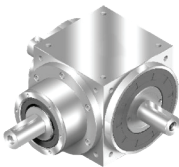
# CT/CTB SERIES DESCRIPTION

## Precision Spiral Bevel Gearbox

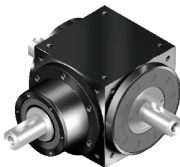


The CT/CTB Series are highly accurate spiral bevel gearboxes that deliver excellent torque, high levels of efficiency, and reduced backlash. With stainless and standard steel options available, these gearboxes have long service lives and are maintenance free. Choose from a number of gearbox configurations and output shaft options including up to 4 shafts and hollow shafts. Split power in two directions, turn a corner and/or change the direction of shaft rotation with these precision spiral bevel gearboxes.

- CT is 100% stainless steel
- CTB is standard steel
- ≤ 6 arc minutes of backlash
- Ratios from 1:1 to 5:1
- Long lasting, maintenance free



Stainless - CT



Carbon Steel - CTB

## Ordering Information

**CT/CTB 065 – L – 001.5 – S1 – Motor**

Motor Designation:  
Manufacturer / Model Number

Shaft Option:  
S1: Smooth Output Shaft  
S2: Output Shaft with Key

Ratio:  
1 Stage: 1, 1.5, 2, 3, 4, 5

Gearbox:  
L / L1 / H / C / R1 / LM / RM / 4M

Gearbox Size:  
CT065, CT075, CT090, CT110, CT140, CT170, CT210, CT240, CT280 CTB065,  
CTB075, CTB090, CTB110, CTB140, CTB170, CTB210, CTB240, CTB280