

Oldham Couplings

CL4 Series

- Zero backlash, flexible shaft
- Accommodates high parallel and angular misalignment
- High torsional stiffness and response
- Simple configuration, easy to assemble
- Multiple bore and shaft connecting configurations



Setscrew Type



Clamp Type

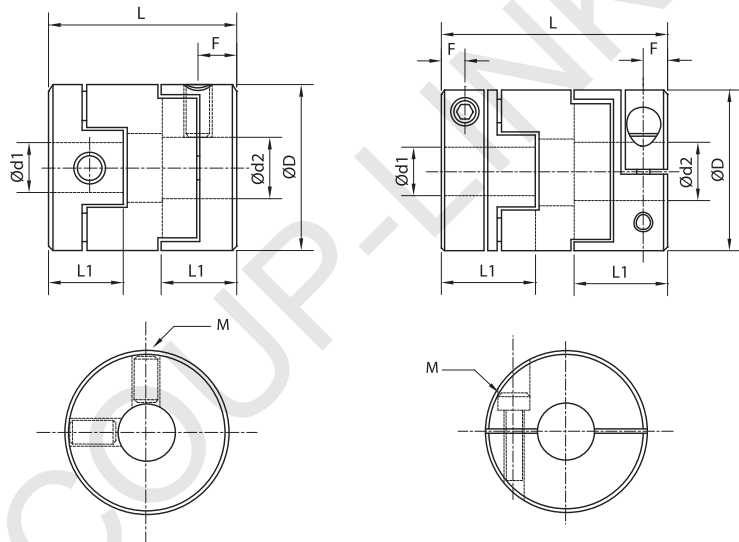
CL4 OPTIONS

Aluminum Hubs 6061
Elastomer Insert
Setscrew
Clamp

ORDERING INFORMATION

CL4 - □ - □ - □ - □ - □

d2 Bore
d1 Bore
Outside Diameter
(C) Clamp, no sign
for setscrew



CL4 SETSCREW AND CLAMP DIMENSIONS

Model	Bore Range ($\varnothing d1 - \varnothing d2$)		$\varnothing D$	L		F		L1		M		Wrench Torque
	Setscrew and Clamp			Setscrew	Clamp	Setscrew	Clamp	Setscrew	Clamp	Setscrew	Clamp	Setscrew & Clamp
	in	mm	mm	mm	mm	mm	mm	mm	mm	metric	metric	Nm
CL4-16	0.15-0.23	4-6	16	18	30	3.5	3	7	13	M3	M2.5	0.7
CL4-20	0.23-0.31	6-8	20	23	33	4.5	3	9	14	M4	M2.5	1.7
CL4-25	0.25-0.39	6.35-10	25	28	39	5.5	3.8	11	17	M5	M3	4
CL4-32	0.31-0.55	8-14	32	33	45	6.5	4.5	13	19	M6	M4	7
CL4-40	0.47-0.62	12-16	40	35	50	7	7	14	23	M6	M5	7
CL4-50	0.55-0.78	14-20	50	38	58	8.5	8	17	27	M8	M6	15
CL4-63	0.62-0.98	16-25	63	47	71	10.5	10	21	33	M10	M8	30

CL4 SETSCREW AND CLAMP SPECIFICATIONS

Model	Rated Torque		Max. Torque		Max. Speed	Moment of Inertia ($\text{kg}\cdot\text{m}^2$)		Static Torsional Stiffness	Errors of Eccentricity (mm)	Errors of Angularity ($^{\circ}\text{C}$)	Mass (g)	
	lb-in	Nm	lb-in	Nm		rpm	Setscrew				Clamp	Nm/rad
CL4-16	6.20	0.7	12.39	1.4	9000	3.0×10^{-7}	5.0×10^{-7}	29	1	3	6	12
CL4-20	14.16	1.6	28.32	3.2	7400	9.0×10^{-7}	1.4×10^{-7}	58	1.4	3	14	20
CL4-25	26.55	3.0	53.10	6.0	5800	2.8×10^{-6}	4.1×10^{-6}	125	1.9	3	24	36
CL4-32	48.67	5.5	97.35	11.0	4700	8.9×10^{-5}	1.2×10^{-5}	260	2.4	3	46	66
CL4-40	79.65	9.0	159.30	18.0	3600	2.1×10^{-5}	3.8×10^{-5}	505	2.8	3	80	114
CL4-50	168.15	19.0	336.30	38.0	3000	6.0×10^{-5}	1.0×10^{-4}	780	3.3	3	144	206
CL4-63	292.05	33.0	584.10	66.0	2400	2.1×10^{-4}	3.5×10^{-4}	1200	3.8	3	318	454