

# Encoder Couplings

# CL12 Series

- Zero backlash, flexible shaft
- Low inertia
- Polyester resin with glass fibers
- Electrical isolation

## CL12 OPTIONS

- Fiberglass Beam
  - CL12-13 and -15
- Aluminum Hubs with Elastomer Insert
  - CL12-25 and -42
- Setscrew



CL12-13 and -15

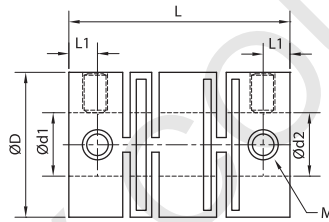
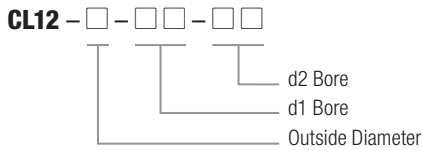


CL12-25

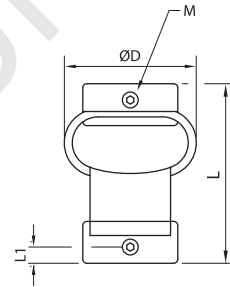


CL12-42

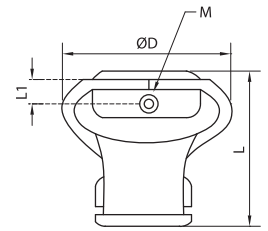
## ORDERING INFORMATION



CL12-13 and -15



CL12-25



CL25-42

## CL12 SETSCREW DIMENSIONS

Model	Bore Range (Ød1-Ød2)		ØD	L	L1	M	Wrench Torque
	in	mm					
CL12-13	0.157	4	13	22	3.2	M3	0.7
CL12-15	0.236	6	15	22	3.2	M3	0.7
CL12-25	0.157-0.394	4-10	25	34	3.2	M3	0.7
CL12-42	0.236-0.551	6-14	42	48	6	M4	1

## CL12 SETSCREW SPECIFICATIONS

Model	Rated Torque		Max. Torque		Max. Speed	Errors of Shaft Angularity	Mass
	lb-in	Nm	lb-in	Nm			
CL12-13	5.31	0.6	10.62	1.2	6000	3	2.8
CL12-15	7.08	0.8	14.16	1.6	6000	3	4
CL12-25	7.08	0.8	14.16	1.6	6000	3	13
CL12-42	11.50	1.3	23.01	2.6	4000	3	85