



Candy Manufacturing Co., Inc.

5633 W. Howard St. • Niles, IL 60714

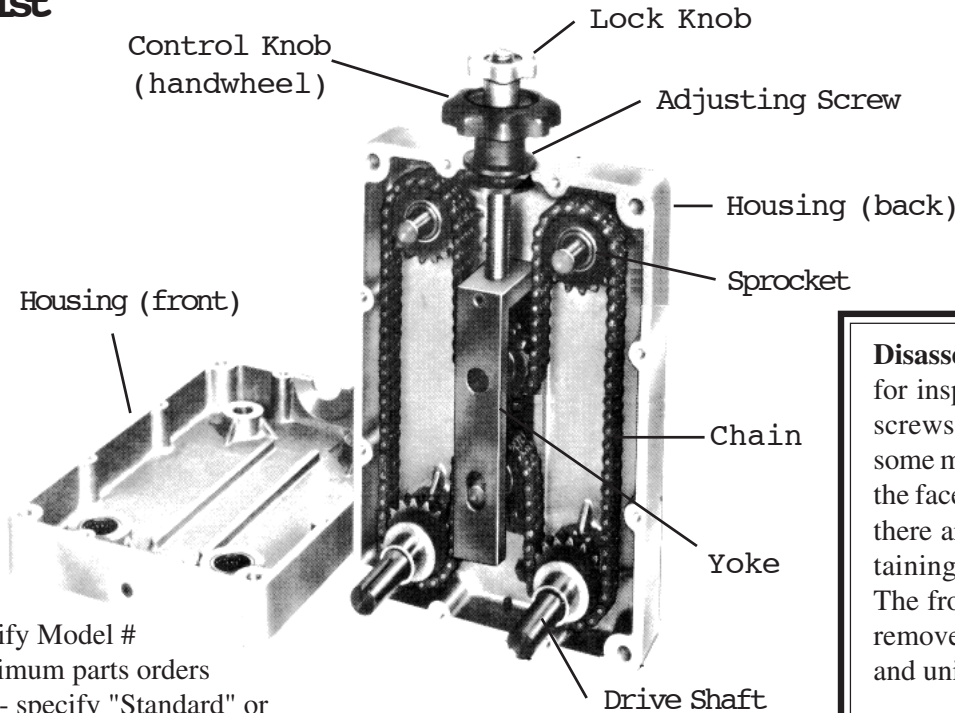
Phone: 847-588-CNDY (2639) • Fax: 847-588-0055

Website: <http://www.candycontrols.com>

E-mail: Candymfgco@aol.com

Candy Phase Variator

Parts List



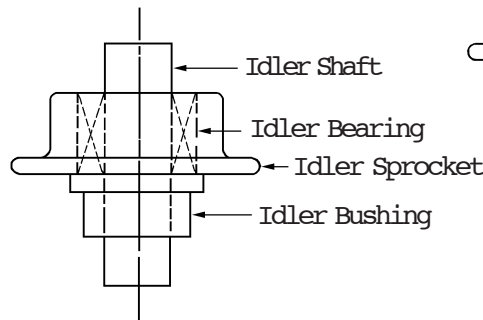
Disassembly: To open the housing for inspection or repairs, remove all screws on the face of the unit. On some models, there are two screws on the face of the unit. On some models, there are two screws holding the retaining plate under the handwheel. The front half of the housing is then removed carefully by slight tapping and uniform pressure upwards.

NOTE:

Please specify Model #
 \$50.00 minimum parts orders
 **Housing - specify "Standard" or "Reverse Shaft" Positions

Description	Qty.
Handwheel Lock Knob	1
Handwheel	1
Adjusting Screw	1
Housing, Back**	1
Housing, Front**	1
Chain	1
Yoke Take-Up Shaft	1
Idler Take-Up Sprocket	1
Yoke	1
Yoke Bearing	
Idler Shaft/Yoke	1
Idler Shaft	2
Idler Bearing	2
Idler Bushing	2
Idler Sprocket	2
Drive Shaft Key	2
Drive Roll Pin	2
Drive Sprocket	2
Drive Bearing	2
Drive Bushing	2
Drive Shaft	2
Oil Seal	1
Drive Races	

Idler Sprocket Assembly



Drive Shaft Assembly

